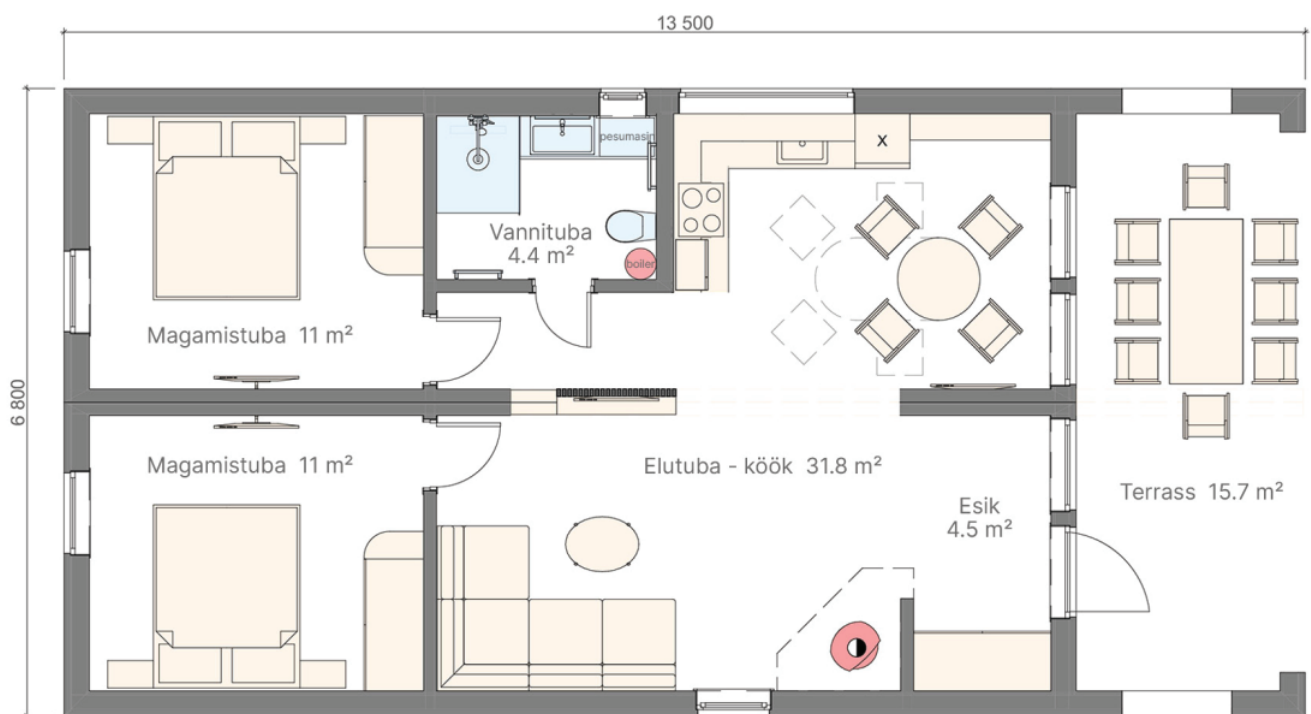


# WILLOW

 Total surface area - 91.8 m<sup>2</sup>

 Usable surface area - 78.4 m<sup>2</sup>



Exterior walls

- 1 Exterior cladding: Pine board, painted 20 mm. Textured cover / Trapezoidal profile T-8
- 2 Treated with bio wood preservative: Horizontal pine timber beam 30×70 mm
- 3 Treated with bio wood preservative: Vertical pine timber beam 30×70 mm
- 4 Windbreak board; Density: 90 g/m²
- 5 OSB-3 board 10 mm
- 6 Insulation: Mineral wool in the cross-section of the frame 150 mm, thermal conductivity: 0.037 W/mK
- 7 Frame: Pine wood 50×150 mm, treated with bio wood preservative
- 8 Vapor barrier film; Density: 110 g/m²
- 9 Treated with bio wood preservative: Vertical pine timber beam 30×70 mm
- 10 Textured with coating. Pine wood cladding thickness 20 mm, painted, treated with bio wood preservative



Floor

- Rooms and corridor 1  
Washroom: ceramic tile
- Rooms and corridor: OSB-3 board 22 mm  
Washroom: OSB-3 board 10 mm + Cement particle board 12 mm
- Vapor barrier film; Density: 110 g/m²
- Floor joists: pine timber beam 50×200mm
- Insulation in floor joists: mineral wool 200 mm, treated with bio wood preservative
- Wind barrier board; Density: 90 g/m²
- OSB-3 board 10 mm
- Base waterproofing layer of the house



Roof

- 1 Trapezoidal profile T-147
- 2 Horizontal pine timber beam 30×70 mm, with textured coating
- 3 Vertical pine timber beam 30×70 mm, treated with bio wood preservative
- 4 Moisture permeability: 1300 g/m² in 24 hours
- 5 Insulation between rafters: mineral wool 200 mm, Thermal conductivity: 0.037 W/mK
- 6 Rafters: pine timber beam 50×200mm, treated with bio wood preservative
- 7 Vapor barrier film; Density: 110 g/m²
- 8 Vertical pine timber beam 30×70 mm, treated with bio wood preservative
- 10 Pine cladding 20 mm thick, painted and treated with bio wood preservative





# Equipment

## Frame and insulation

- North, frame of walls and ceiling: pine wood,dry, polished
- OSB board 22 mm for laminate base
- OSB board 10 mm for reinforcing the frame of exterior walls
- Floor insulation / thickness of floor construction
- Floor insulation / thickness of floor construction
- Ceiling insulation / thickness of ceiling/roof construction
- Exterior wall insulation / thickness of interior walls

- ✓
- ✓
- ✓
- 200 mm / 240 mm
- 200 mm / 340 mm
- 150 mm / 285 mm
- 150 mm / 135 mm

## Exterior finishing

- Exterior facade: pine board/metal
- Roof: metal profile; Gutter system: metal

- ✓
- ✓

## Interior finishing

- Flooring in rooms
- Flooring in washroom
- Finishing of interior walls and ceiling

- Water-resistant laminate
- Ceramic tile
- Knotless pine wood cladding

## Bathroom

- Shower
- Toilet
- Sink 600×440 mm with cabinet
- Mirror

- The shower area is surrounded by ceramic floor tiles. The walls are designed for water drainage and are made of glass. It is slightly sloped to facilitate drainage.
- Compact floor toilet
- 600×800 mm with lighting

## Electricity

- Wiring, electrical panel with automation, external and internal lights, sockets, switches

- ✓

## Heating

- Sockets for connecting heaters in every room
- Forced ventilation in the bathroom

- ✓
- ✓

## Water supply and sewage

- All necessary pipes installed
- Water heating boiler with a capacity of 50 liters

- ✓

## Ventilation

- Kitchen ventilation duct for hood installation
- Forced extraction ventilation in the bathroom

- ✓



















